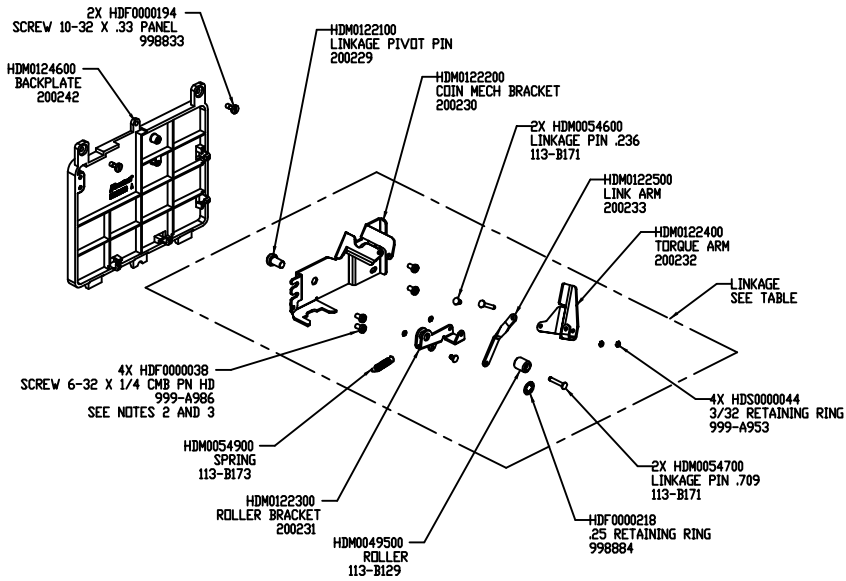


4

3

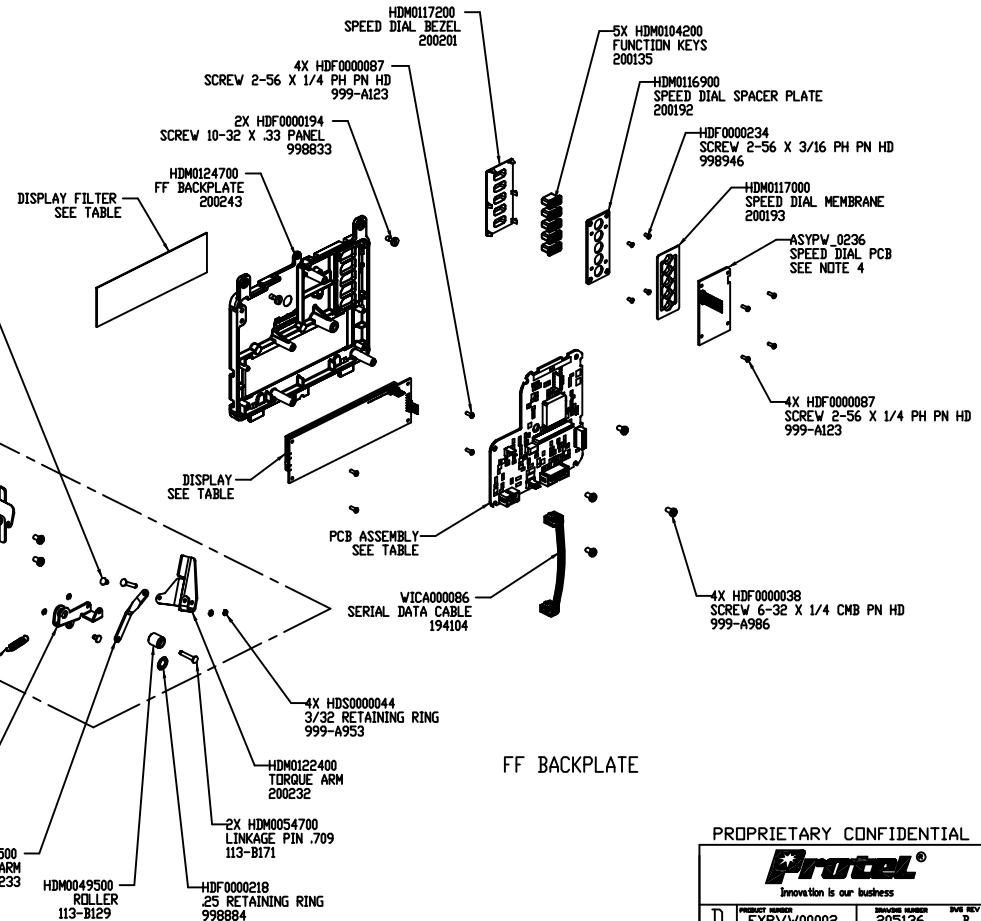
2

1



BASIC BACKPLATE

BACKPLATE CONFIGURATION TABLE					
PART NUMBER	DESCRIPTION	DISPLAY	DISPLAY FILTER	PCB ASSEMBLY	LINKAGE
ASY0000118 200244	ASSY BACKPLATE VFD W/H LNK	ASY0000056 194107	HDM0117400 200203	ASYPW_1253 SEE NOTE 4	ASY0000103 200226
ASY0000119 200245	ASSY BACKPLATE BASIC W/H LNK	----	----	----	ASY0000103 200226
SEE NOTE 5 ASY0000123 200244	ASSY BACKPLATE CARTE COINLESS	ASY0000110 205116	----	ASYPW_Q253 SEE NOTE 4	----
SEE NOTE 5 ASY0000124 200244	ASSY BACKPLATE VFD COINLESS	ASY0000056 194107	HDM0117400 200203	ASYPW_1253 SEE NOTE 4	----
ASY0000125 200244	ASSY BACKPLATE CARTE W/H LNK	ASY0000110 205116	----	ASYPW_Q253 SEE NOTE 4	ASY0000103 200226
ASY0000126 200245	ASSY BACKPLATE BASIC COINLESS	----	----	----	----
ASY0000135 200244	ASSY BACKPLATE LCD COINLESS	ASY0000107 201212	----	ASYPW_2253 SEE NOTE 4	----
ASY0000136 200244	ASSY BACKPLATE LCD W/H LNK	ASY0000107 201212	----	ASYPW_2253 SEE NOTE 4	ASY0000103 200226



FF BACKPLATE

NOTES: UNLESS OTHERWISE SPECIFIED

1. THE BACKPLATE CONFIGURATION TABLE IS PROVIDED AS AN AID FOR DETERMINING THE PART NUMBERS OF OPTIONAL COMPONENTS. THIS TABLE IS FOR REFERENCE ONLY. REFER TO SEPARATE CMC BILL OF MATERIAL FOR SPECIFIC CONFIGURATIONS.
2. FOR CLARITY THE LINKAGE MOUNTING SCREWS (4X HDF0000038) ARE ILLUSTRATED WITH THE LINKAGE. THEY ARE NOT PART OF THE ASY0000103 SUB ASSEMBLY.
3. ADD SMALL AMOUNT OF THREAD LOCKER ADHESIVE (HDS0000231) TO EACH SCREW PRIOR TO INSTALLING LINKAGE ON BACKPLATE.
4. SEE SEPARATE CMC BILL OF MATERIAL FOR CURRENT PCB ASSEMBLY PART AND DRAWING NUMBERS.
5. FF BACKPLATE W/CARTE DISPLAY NOT RELEASED. SEE ECO-5358.

PROPRIETARY CONFIDENTIAL

Protel Innovation is our business		
PROJECT EXPVW00002	ISSUED NUMBER 205136	REV B
SCALE 1:2	PAGE FILE 0036	SHEET 2 OF 3

4

3

2

1